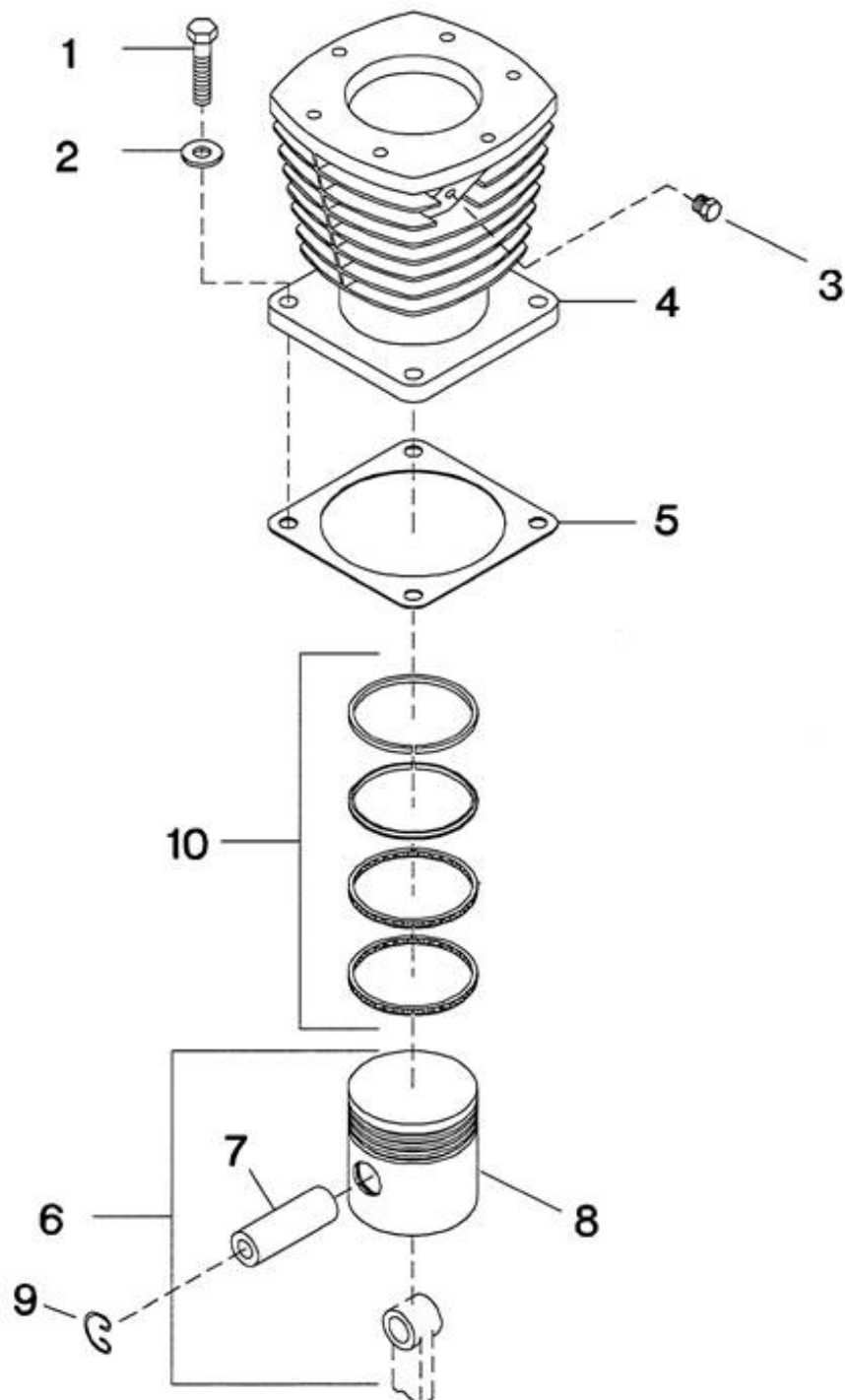


5. Second Stage Cylinder & Piston - Model 3000



All manufacturer's names, numbers, photos, product description and/or part numbers are used for reference purposes only & it is not implied that any part listed is the product of these manufacturers. Since Approvement are made from time to time, the illustration and specifications are subject to change without notice.

5. Second Stage Cylinder & Piston - Model 3000

REF. NO.	PART NO.	DESCRIPTION	QTY.	SPARES		
				1	2	3
5-1	95053567	CAPSCREW, HEX HEAD - 1/2-13 X 1-1/4"	4			
5-2	95674701	WASHER, COPPER - 1/2"	4			
5-3	95252409	PLUG, PIPE - HEX HEAD - 1/4"	1			
5-4	32172165	CYLINDER, SECOND STAGE	1			
5-5	30294235	GASKET, FLANGE	1	1	1	2
5-6	32054520	ASSEMBLY, PISTON/PIN - 4"	1		1	1
5-7	37131695	• PIN, PISTON	1			
5-8	NSS	• PISTON - 4"	1			
5-9	30288450	RING, LOCK	2			
5-10	32194151	SET, RING - 4"	1	1	1	2

All manufacturer's names, numbers, photos, product description and/or part numbers are used for reference purposes only & it is not implied that any part listed is the product of these manufacturers. Since Approvement are made from time to time, the illustration and specifications are subject to change without notice.